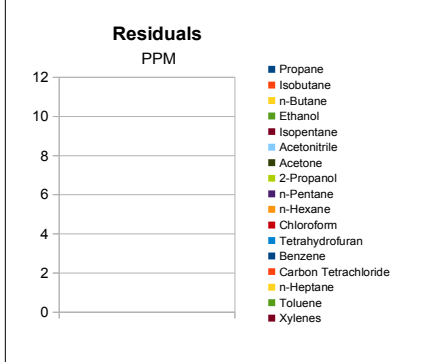


Sample Information		
Sample Identification	Isolate	
Laboratory Number	2019017168	
Batch Number	NA	
Matrix	Isolate	
Analyzed Date	08/15/19	
Extraction Date	08/15/19	
Cannabinoid (HPLC)		
Compound	%	mg/g
CBD-V	NT	NT
CBD-A	NT	NT
CBG	NT	NT
CBD	NT	NT
THC-V	NT	NT
CBN	NT	NT
Delta 9-THC	NT	NT
CBC	NT	NT
THC-A	NT	NT
Delta 8-THC	NT	NT
Cannabinoids Total		
Max Active THC	NT	NT
Max Active CBD	NT	NT
T. Active Cannabinoids	NT	NT
Total Cannabinoids	NT	NT
Max Active Ratios		
NA :1 CBD to THC		
NA :1 THC to CBD		
Cannabinoid %		



RS (GCMS-HS) Compound	PPM	RL
Propane	ND	5.0
Isobutane	ND	5.0
n-Butane	ND	5.0
Ethanol	ND	5.0
Isopentane	ND	5.0
Acetonitrile	ND	5.0
Acetone	ND	50.0
2-Propanol	ND	5.0
n-Pentane	ND	5.0
n-Hexane	ND	5.0
Chloroform	ND	5.0
Tetrahydrofuran	ND	5.0
Benzene	ND	5.0
Carbon Tetrachloride	ND	5.0
n-Heptane	ND	5.0
Toluene	ND	5.0
Xylenes	ND	10.0

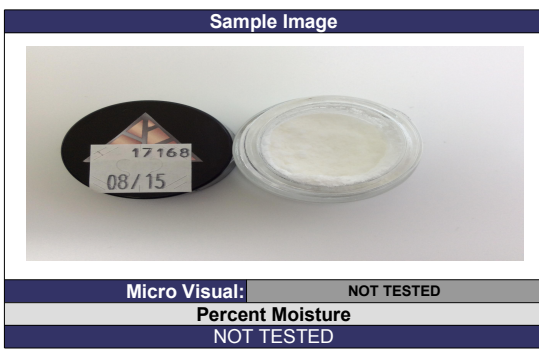
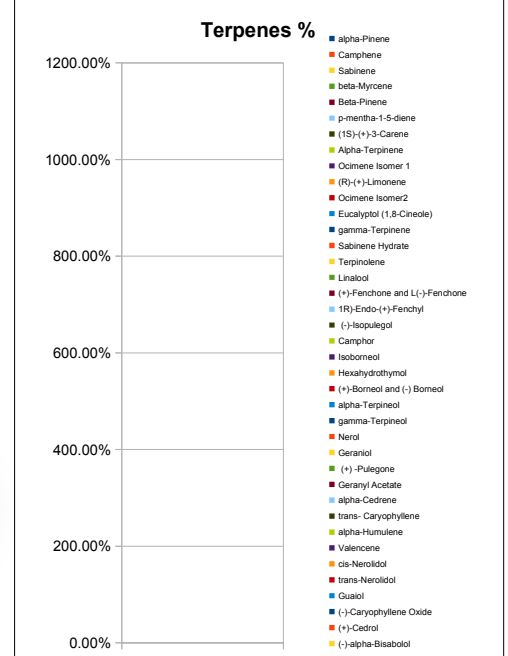


g/medible	NA
mg THC/medible	NA
mg CBD/medible	NA
(mg) total cannabinoids/medible	NA

Metals Compound	PPM	RL
Lead	ND	0.018
Arsenic	0.032	0.007
Cadmium	0.006	0.004
Mercury	ND	0.020

Microbial Compound	CFU/g
Enterobacteriaceae	NT
Coliform	NT
Ecoli	NT
Aerobic	NT
Yeast	NT
Mold	NT

Terpene (GC-MS) Compound	%	mg/g
alpha-Pinene	NT	NT
Camphene	NT	NT
Sabinene	NT	NT
beta-Myrcene	NT	NT
Beta-Pinene	NT	NT
p-mentha-1-5-diene	NT	NT
(1S)-(+)-3-Carene	NT	NT
Alpha-Terpinene	NT	NT
Ocimene Isomer 1	NT	NT
(R)-(+)-Limonene	NT	NT
Ocimene Isomer2	NT	NT
Eucalyptol (1,8-Cineole)	NT	NT
gamma-Terpinene	NT	NT
Sabinene Hydrate	NT	NT
Terpinolene	NT	NT
Linalool	NT	NT
(+)-Fenchone and L(-)-Fenchone	NT	NT
1R)-Endo-(+)-Fenchyl	NT	NT
(-)-Isopulegol	NT	NT
Camphor	NT	NT
Isoborneol	NT	NT
Hexahydrothymol	NT	NT
(+)-Borneol and (-) Borneol	NT	NT
alpha-Terpineol	NT	NT
gamma-Terpineol	NT	NT
Nerol	NT	NT
Geraniol	NT	NT
(+) -Pulegone	NT	NT
Geranyl Acetate	NT	NT
alpha-Cedrene	NT	NT
trans- Caryophyllene	NT	NT
alpha-Humulene	NT	NT
Valencene	NT	NT
cis-Nerolidol	NT	NT
trans-Nerolidol	NT	NT
Guaiol	NT	NT
(-) Caryophyllene Oxide	NT	NT
(+) Cedrol	NT	NT
(-) alpha-Bisabolol	NT	NT
Total Terpenes	NA	NA



Chemist: JW
 Report Expires: 11/14/19

RL=Reporting Limit
 NA=Not Applicable
 NT=Not Tested
 ND=Non Detected
 TNTC=Too Numerous to Count